

REGION 10 CHAMPIONSHIP



20

25

SUNFLOWER GLIDERPORT

JULY 28TH — AUGUST 1ST

Location

Sunflower Aerodrome
Yoder, Kansas USA
37.9262778N, 97.9066944W
Elevation: 1582 Feet MSL

Schedule

Practice Day 1	Saturday, 26 July 2025
Practice Day 2	Sunday, 27 July 2025
1 st Contest Day	Monday, 28 July 2025
2 nd Contest Day	Tuesday, 29 July 2025
Cookout Dinner presented by Sunflower Soaring Foundation	Tuesday, 29 July 2025 – 6:30pm
3 rd Contest Day	Wednesday, 30 July 2025
4 th Contest Day	Thursday, 31 July 2025
5 th Contest Day	Friday, 1 August 2025
Banquet at Soaring Center	Friday, 1 August 2025 – 6:30pm

Organizers

- Kansas Soaring Association
 - Kirk Bittner – President
 - Phone – (860) 670 – 5544
 - Email – kansas.soaring@gmail.com
- Sunflower Soaring Association
 - Bob Hinson – President
 - Phone - (316) 841 – 5561
 - Tony Condon – Manager
 - Phone - (515) 291 – 0089

Key Contest Personnel

- Contest Manager – Kirk Bittner
 - Phone – (860) 670 – 5544
 - Email – kansas.soaring@gmail.com
- Contest Director – Tony Condon
 - Phone – (515) 291 – 0089
 - Email – abcondon@gmail.com
- Scorer – TBD
- Operations Manager – Steve Leonard
 - Phone – (316) 249 – 7248
 - Email – zuni228@yahoo.com

Competition Rules and Local Procedures

A copy of the 2025 SSA Competition Rules can be found [here](#).

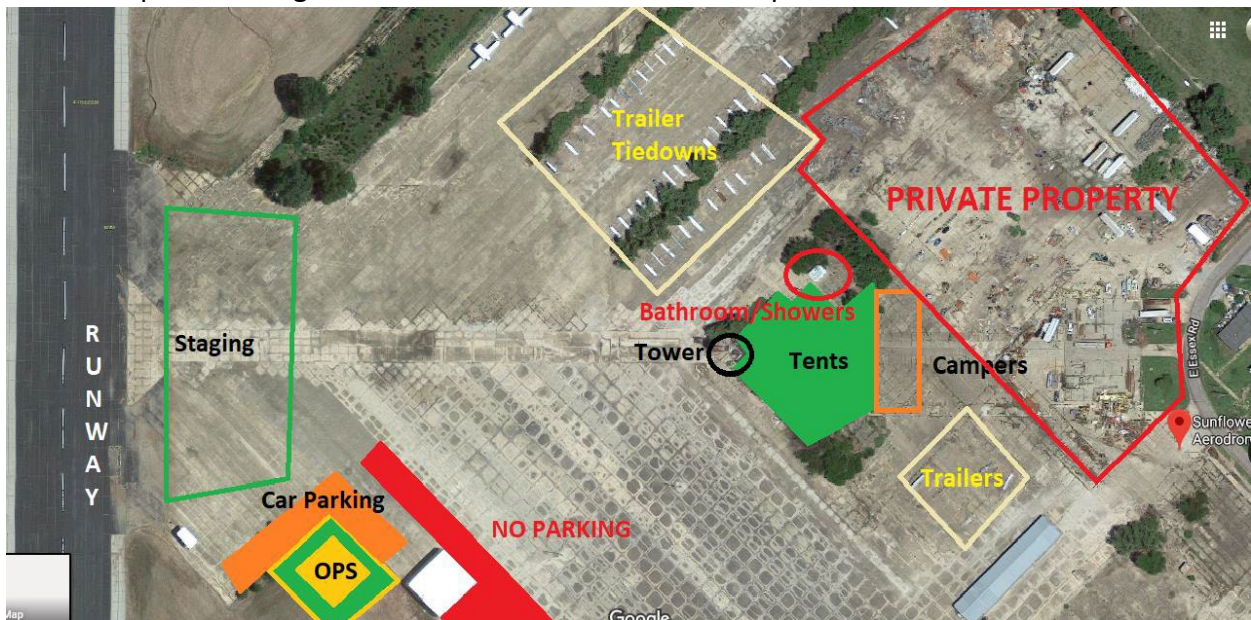
Turnpoint Files

An updated turnpoint file is available on the turnpoint exchange. Turnpoint files will be named "sunflwr5".

<https://soaringweb.org/TP/Hutchinson/>

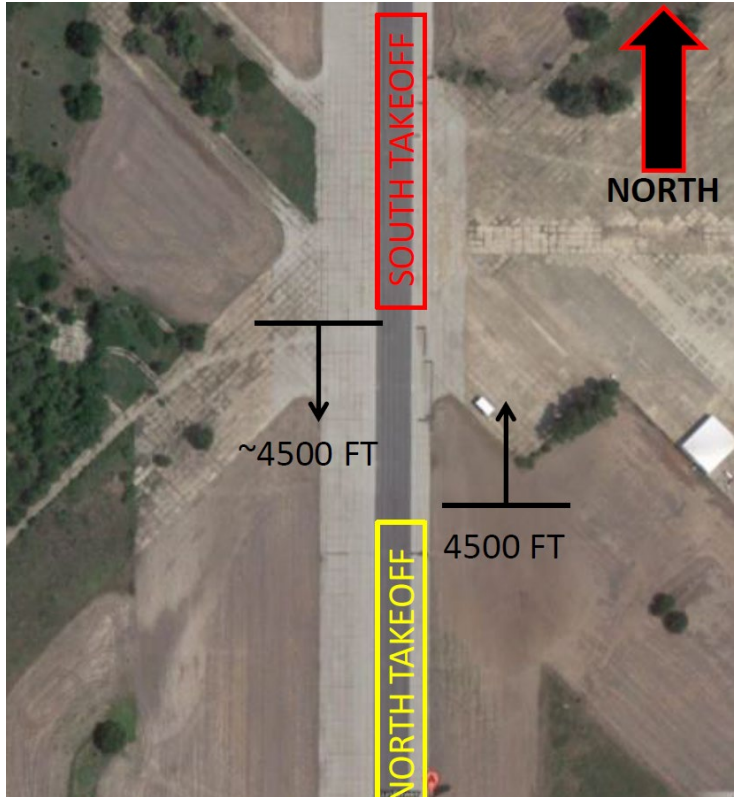
Field Operations

- Sunflower is a Private airport used primarily for glider operations.
- We will probably have some contest related airplane traffic in the mornings.
- Keep an eye out for traffic inbound to Wichita Mid Continent (KICT) and Hutchinson Airport (KHUT).
- You must provide your own tie out gear for trailers and gliders. Tie down rings are set in the concrete.
- Park trailers in any open spot.
- Gliders can be tied out overnight if desired, at or near your Trailer.
- In the event of Severe Weather, the rooms in the base of the tower or the bathroom in the Operations Building are the best place for protection.
- Do not park glider trailers or assemble gliders on the Ramp/Staging Area.
- Do not tie gliders out overnight on the Ramp/Staging Area.
- Do not park vehicles on the asphalt surface of the Ramp/Staging Area . Vehicles should be parked along the tree line to the east of the Ramp.



Grid Procedures

- Grid positions will be marked on the Runway.
- Gliders on East half of runway, Towplanes taxi on West half of runway.
- Grid for takeoff in either direction will start at the South end of the ramp at midfield.



- Sunflower has one runway, 17/35, 7000x200ft.
- *Be aware of the Tall Trees at both ends. Fly over or around them.*
- Do not land on the ramp.
- Left hand patterns if possible, otherwise announce.
- If possible land with enough energy to clear the runway at the ramp.
- Landing short or long is OK. Someone will come get you.
- Expedite moving your glider off to the side to give others room to clear the runway behind you.

Radio Frequencies

- 123.5 - on tow, contest frequency, start & finish
- 126.7 - Wichita Approach
- 118.5 - Hutchinson Tower
- 124.25 - Hutchinson ATIS

Accommodation

VisitHutch.com – Lodging

List of Hotels, Motels, RV Parks, and other lodging options in the greater Hutchinson KS area.

<https://www.visithutch.com/lodging/?compact=&sort=&cat=Lodging>

Airbnb – House and Apartment Rentals

There are several listings within Yoder KS. For more options, expand your search to “Reno County, KS” to see listings in Hutchinson and the surrounding area.

<https://t.ly/pV7k>

ICT Campers – RV Rental Business Located in Wichita <https://www.ictcampers.com/>

Outdoor Adventures RV – RV Rental Business located northeast of Wichita

<https://www.outdooradventuresrv.com/>

Ramsey RV Rentals – RV Rental Business located east of Wichita.

<https://www.ramseysrvrental.com/>

Outdoorsy.com – RV Rentals

Search for RV rentals in the Wichita or Hutchinson area, or search for RV rentals that can be picked up along your route. [https://www.outdoorsy.com/rv-](https://www.outdoorsy.com/rv-search?page%5Boffset%5D=0&address=Hutchinson%2C%20KS)

[search?page%5Boffset%5D=0&address=Hutchinson%2C%20KS](https://www.outdoorsy.com/rv-search?page%5Boffset%5D=0&address=Hutchinson%2C%20KS)

Campground at Sunflower Gliderport – RV and Tent Camping

Tent camping and limited RV camping is available onsite at Sunflower. For more information or to reserve a spot please read the pdf at the link below.

<http://www.soarkansas.org/variovd/campground2019.pdf>

Entry Fee and Charges

Entry Fee per Pilot -

\$300

Towing Charges -

\$65 to 2000 ft

Camping Charges –

Free Tent Camping

\$10/Night 20 amp RV Hookup

\$15/Night 30 amp RV Hookup

\$25/Night 50 amp RV Hookup

Merch

T-shirts, Posters, and Stickers will be available for sale. A limited number of T-shirts will be available at the contest. If stock runs out and you would like to purchase a t-shirt in your size, you will have the option to purchase a t-shirt and have it shipped to your home after the contest.

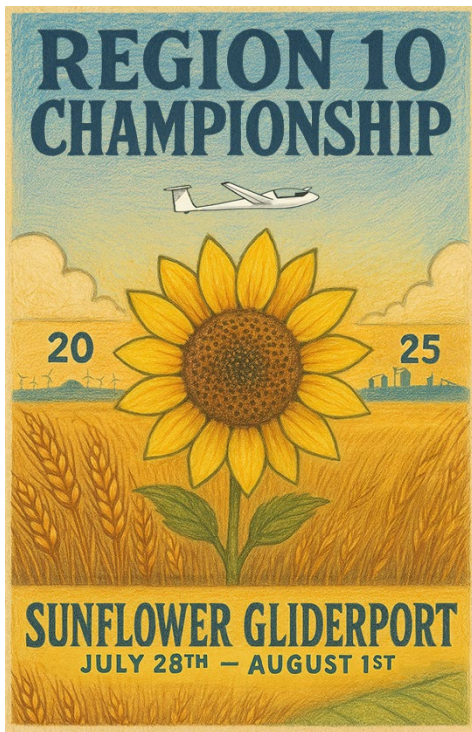
T-Shirts



\$20 at the contest

\$25 when purchased online

Poster



\$10 (11" X 17")

Sticker



\$3 (2" X 2.5")